



Model 240/100  
230/140  
230/103  
230/100  
230/50  
230/38  
230/10

# Instruction Manual

Valid as of: 01.06.2011 • Please keep the manual for future reference!



## 1 Technical specifications

Model	230/100	230/140	230/103	230/50	230/38	230/10	240/100
Cutting thickness	max. 10 mm	max. 5 mm	max. 5 mm	max. 5 mm	max. 5 mm	max. 5 mm	max. 3 mm
Sample cutout	100 cm <sup>2</sup>	154 cm <sup>2</sup>	1/100 yd <sup>2</sup>	50 cm <sup>2</sup>	12 cm <sup>2</sup>	10 cm <sup>2</sup>	100 cm <sup>2</sup>
Sample diameter	113 mm	140 mm	103 mm	80 mm	38 mm	36 mm	113 mm
Blades	4 Stck.	4 Stck.	4 Stck.	4 Stck.	4 Stck.	4 Stck.	4 Stck.
Weight net	1500 g	2000 g	1400 g	1100 g	750 g	750 g	2200 g
Weight gross	2100 g	2600 g	2100 g	1700 g	1400 g	1400 g	2800 g
Dimensions in mm (HxØ)	103x151	110x175	110x138	110x118	113x85	113x80	115x165

### 1.1 Delivery includes

- Sample cutter
- Rubber plate
- 4 spare blades
- Instruction manual

### 1.2 Unpacking

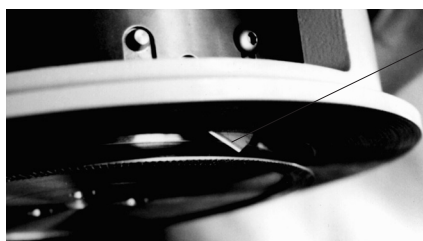
Unpack the sample cutter and inspect it for any shipping damage. Notices of defect must be announced immediately, in writing, at the latest within 7 days on receipt of the goods.

## 2 Safety and accident- prevention

The circular sample cutter has been conceived and built to prepare samples of cloth, paper, carton and other materials that are relatively simple to cut. Such samples are then weighed with the electronic balances model EAR-300 to determine the weight per square metre of the final product. The use of the circular sample cutter does not require particular attention, as far as safety is concerned. The instrument is equipped with a blocking pin to ensure a safety position when not in use (retracted cutting blades).



**Always move the sample cutter with the blades in the safety position to avoid their coming out and accidental contact with hands.**



blade

### 3 Description of functioning

The circular sample cutters has been built to prepare different samples with an area of 154 cm<sup>2</sup>, 100 cm<sup>2</sup>, 1/100 yd<sup>2</sup>, 50 cm<sup>2</sup>, 12 cm<sup>2</sup> or 10 cm<sup>2</sup>.

#### Operating instructions

- Place the material to be cut on the rubber plate keeping tensioned so as to avoid creases.
- Place the sample cutter on the material to be tested, preferably at the centre of the rubber plate.
- Release the blocking pin by pulling it out and rotating it of 90°.
- Rotate the handwheel clockwise for a little more than 1/4 rotation (90°), applying a slight downward pressure.
- Fix the blocking pin by pulling it out and rotating it of 90°.
- Lift up the sample cutter and remove the finished sample.
- After use, always put the instrument away with th blocking pin in the safety position (pressed in) thus avoiding cutting of hands as well as blade damage.



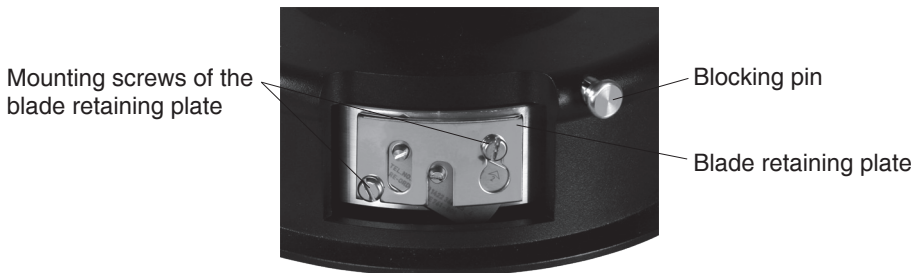
**The blades will be damaged, by rotating the handwheel counterclockwise for cutting material.**

### 4 Maintenance / trouble shooting

The instrument does not require particular maintenance: it is sufficient to occasionally clean the inner components by means of compressed air. Should a sample prove badly cut, check efficiency of the 4 blades and if necessary rotate or replace them.

#### Rotate or replace the blades

- Fix the blades with the blocking pin.
- Loosen the mounting screws of the blade retaining plate and remove the plate
- Rotate the blades or replace them with new blades
- Replace the blade retaining plate and tighten the screws
- Repeat the procedure for each blade



**The blades may be rotated until all cutting corners have been used.**

## 5 Spare parts

When ordering spare parts, always specify quantity, model and order number as illustrated in the example below regarding an order for two blades:

02            240 / 100    60001M  
quantity    model            order number

Please gather order-number and package size from the subsequent table

Spare parts	230/100	230/140	230/103	230/50	230/38	230/10	240/100
Blades (20 piece)	60002M			---	---	---	---
Blades (100 piece)	---	60001M	60001M	60001M	60007M	60007M	60001M
Handle (1 piece)	---			---	---	---	60005M
Rubber plate (1 piece)	60003M						
Rubber plates (10 piece)	60004M						

**More than 75 years - Worldwide -**

***Hans Schmidt & Co GmbH***

**Mailing address:**

P. O. B. 11 54  
84464 Waldkraiburg Germany

**Shipping address:**

Schichtstr. 16  
84478 Waldkraiburg Germany

**Phone:**

int. + 49 / (0)8638 / 9410-0

**Fax:**

int. + 49 / (0)8638 / 4825

int. + 49 / (0)8638 / 67898

**e-mail:**

info@hans-schmidt.com

**Internet:**

http://www.hans-schmidt.com