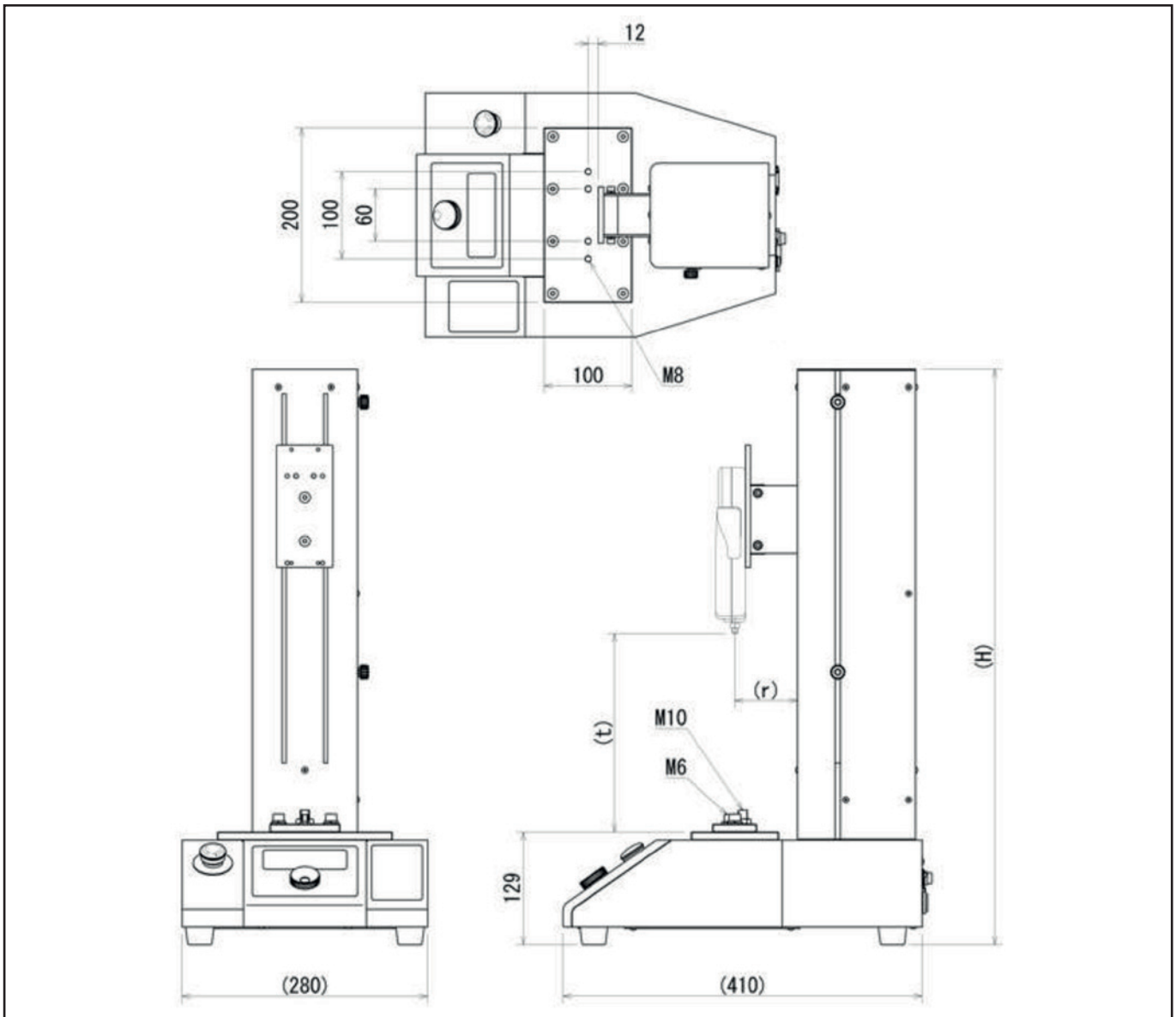


## Force Gauge MX2-1000N



	Model	MX2-1000N	MX2-1000N-L
H		660	960
r	DST/DSV/ZTS/ZTA (2 N up to 500 N)		71
	ZTS/ZTA (2500 N up to 5000 N)		74
	DPU (2 N up to 500 N)		69
	DPUH (1000 N to 5000 N); mounting block is sold separately		73
t	DST/DSV	310	610
	ZTS/ZTA (2 N up to 1000 N)	300	600
	ZTS/ZTA (2500 N up to 5000 N)	340	640
	DPU (2 N up to 10 N)	325	625
	DPU (20 N up to 500 N)	315	615
	DPUH (1000 N to 5000 N); mounting block is sold separately	345	645

Specifications subject to change without notice!