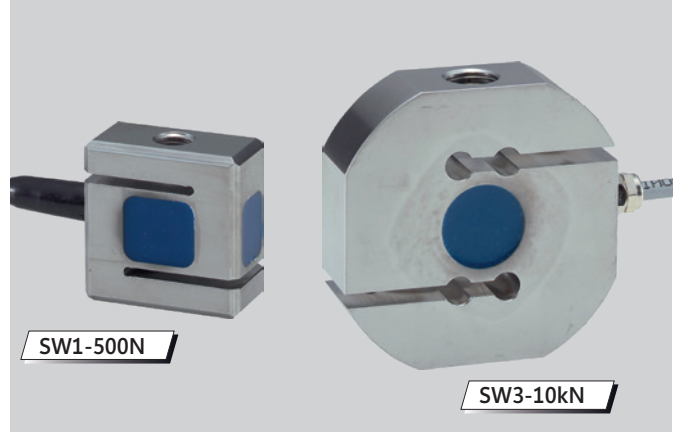


Load Cell SW / eSW

8 measuring ranges from 100 N up to 20 kN

Special Features

- Load Cell for tension and compression forces
- Easily to mount into equipment with the two female threads on the sides
- With an adapter of [CA series](#) a large number of clamps can be mounted at the load cell.
- IP 67 protected



Load Cell for Indicator ZTS/ZTA

Model	Capacity	Resolution	Accuracy*
SW1-100N	100 N	0.1 N	± 0.5 % full scale
SW1-200N	200 N	0.1 N	
SW1-500N	500 N	0.1 N	
SW1-1000N	1000 N	1 N	
SW1-2000N	2000 N	1 N	
SW1-5000N	5000 N	1 N	
SW3-10 kN	20 kN	0.01 kN	
SW3-20 kN	10 kN	0.01 kN	

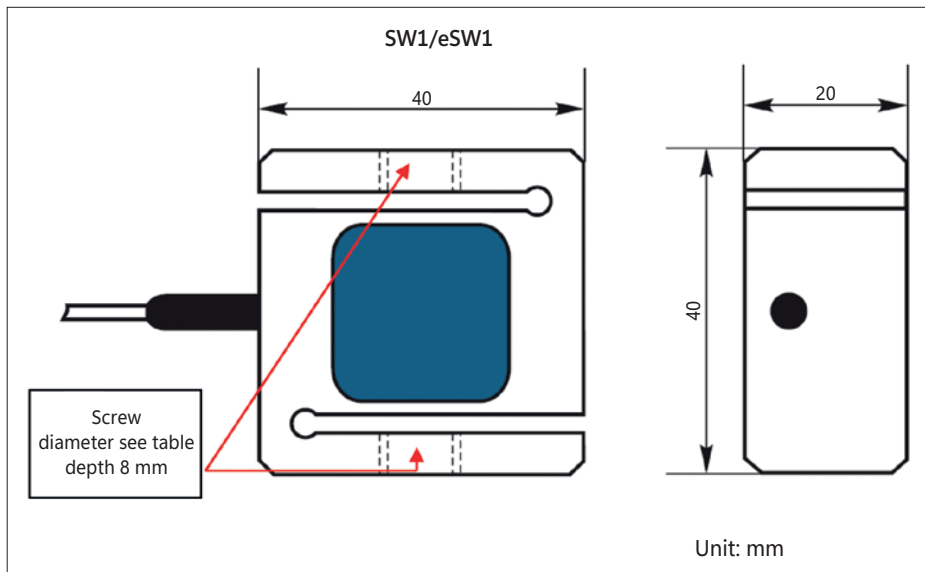
*It is the accuracy of the load cell and indicator combined.

Load Cell for Indicator eZT

Model	Capacity	Resolution	Accuracy*
eSW1-100N	100 N	0.1 N	± 0.7 % full scale
eSW1-200N	200 N	0.1 N	
eSW1-500N	500 N	0.1 N	
eSW1-1000N	1000 N	1 N	
eSW1-2000N	2000 N	1 N	
eSW1-5000N	5000 N	1 N	
eSW3-10 kN	20 kN	0.01 kN	
eSW3-20 kN	10 kN	0.01 kN	

*It is the accuracy of the load cell and indicator combined.

Dimensional Drawing



Model	Model	Screw Ø
SW1-100N	eSW1-100N	M6
SW1-200N	eSW1-200N	M6
SW1-500N	eSW1-500N	M8
SW1-1000N	eSW1-1000N	M8
SW1-2000N	eSW1-2000N	M10
SW1-5000N	eSW1-5000N	M10

SW-E - Subject to change without notice.

Hans Schmidt & Co GmbH
Schichtstr. 16
84464 Waldkraiburg Germany

Phone: int. + 49 / (0)8638 / 9410-0
Fax: int. + 49 / (0)8638 / 4825

e-mail: info@hans-schmidt.com
Internet: <http://www.hans-schmidt.com>

