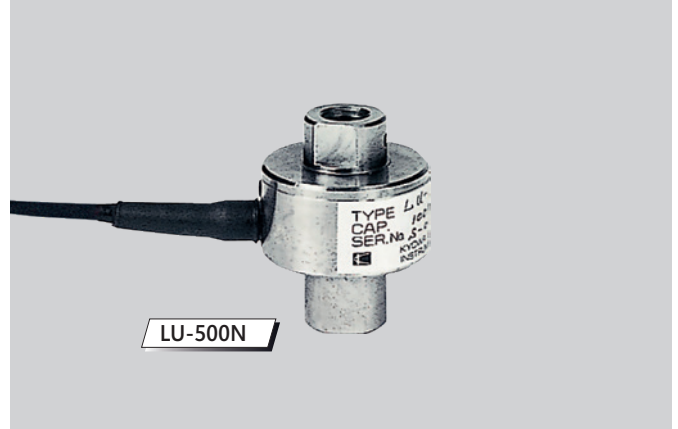


Load Cell LU/eLU

2 measuring ranges from 500 N up to 2000 N

Special Features

- Load Cell for tension and compression forces
- Ideal for narrow spaces due to their small size and light weight
- Designed to integrate into facilities
- With an adapter of [CA series](#) a large number of clamps can be mounted at the load cell.



Load Cell for Indicator ZTS/ZTA

Model	Capacity	Resolution	Accuracy*
LU-500N	500 N	0.1 N	± 1.0 % full scale
LU-2000N	2000 N	1 N	

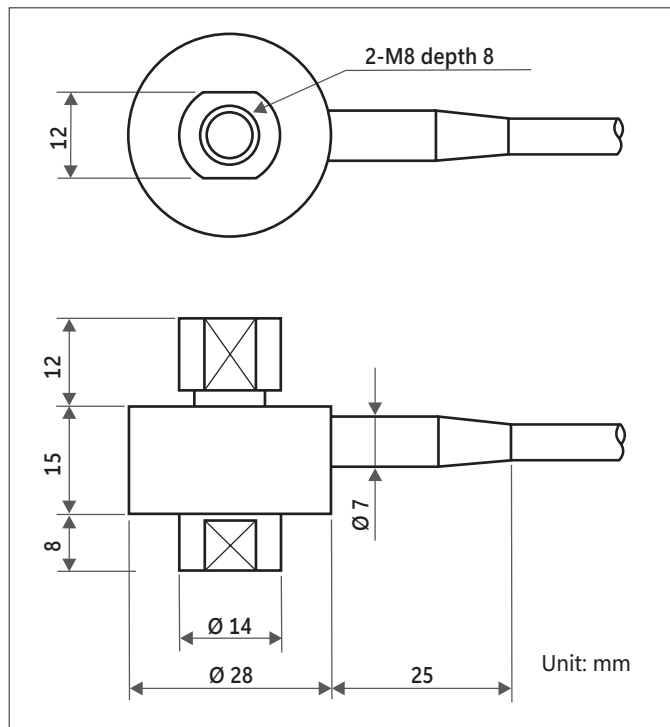
*It is the accuracy of the load cell and indicator combined.

Load Cell for Indicator eZT

Model	Capacity	Resolution	Accuracy*
eLU-500N	500 N	0.1 N	± 1.2 % full scale
eLU-2000N	2000 N	1 N	

*It is the accuracy of the load cell and indicator combined.

Dimensional Drawing



LU-E - Subject to change without notice.

Hans Schmidt & Co GmbH
Schichtstr. 16
84464 Waldkraiburg Germany

Phone: int. + 49 / (0)8638 / 9410-0
Fax: int. + 49 / (0)8638 / 4825

e-mail: info@hans-schmidt.com
Internet: <http://www.hans-schmidt.com>

Specifications	LU	eLU
Accuracy:*	± 1.0 % full scale or less	± 1.2 % full scale or less
Rated output:	± 0.9 - 1.4 mV/V	—
Nonlinearity:	0.5 % R.O.	—
Hysteresis:	0.5 % R.O.	—
Recommended Voltage: (Allowable Voltage)	2 - 5 V AC or DC (7 V AC or DC)	—
Overload capacity:	150 %	150 %
Recommended temperature: (Allowable temperature)	0 - 70 °C -10 - 70 °C	0 - 70 °C -10 - 70 °C
Temperature influence for 0 degree:	0.05 %/°C	—
Temperature influence for output:	0.05 %/°C	—
Cable:	Approx. 3 m	Approx. 3 m
Weight:	Approx. 150 g	Approx. 150 g

*It is the accuracy of the load cell and indicator combined.