

Load Cell CLFX/eCLFX

2 measuring ranges from 50 N up to 500 N

Special Features

- Load cell for compression forces
- Sensor surface with large area, suitable for soft and/or spherical samples
- Thin design for measurements in limited space
- IP 64 protected



Load Cell for Indicator ZTS/ZTA

Model	Capacity	Resolution	Accuracy*
CLFX-50N	50 N	0.01 N	± 2.0 % full scale
CLFX-500N	500 N	0.1 N	

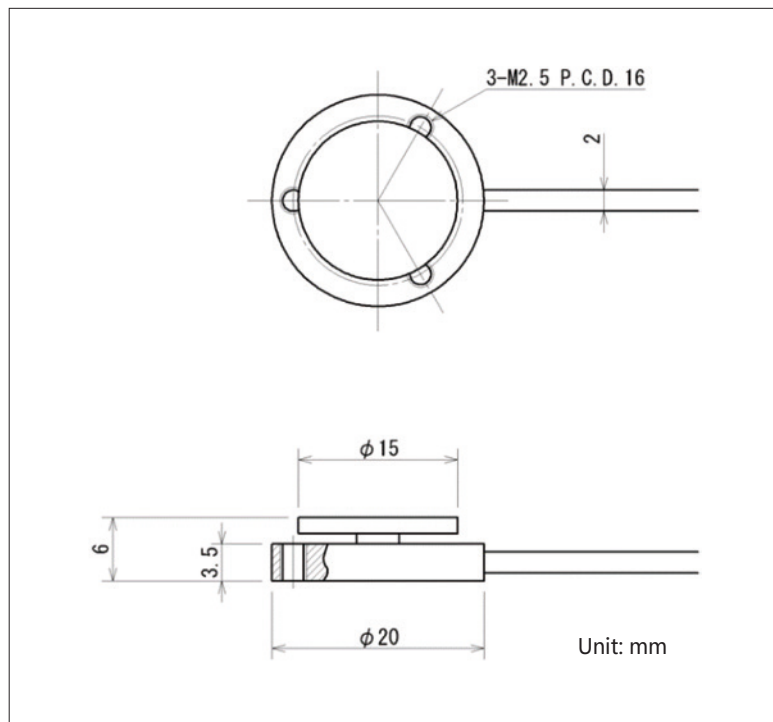
*It is the accuracy of the load cell and indicator combined.

Load Cell for Indicator eZT

Model	Capacity	Resolution	Accuracy*
eCLFX-50N	50 N	0.01 N	± 2.2 % full scale
eCLFX-500N	500 N	0.1 N	

*It is the accuracy of the load cell and indicator combined.

Dimensional Drawing



CLFX-E - Subject to change without notice.

Hans Schmidt & Co GmbH
Schichtstr. 16
84464 Waldkraiburg Germany

Phone: int. + 49 / (0)8638 / 9410-0
Fax: int. + 49 / (0)8638 / 4825

e-mail: info@hans-schmidt.com
Internet: <http://www.hans-schmidt.com>

Specifications	CLFX	eCLFX
Accuracy:*	± 2.0 % full scale or less	± 2.2 % full scale or less
Rated output:	0.7 - 1.5 mV/V	—
Recommended Voltage: (Allowable Voltage)	5 - 10 V DC (10 V DC)	—
Overload capacity:	150 %	150 %
Recommended temperature: (Allowable temperature)	-10 - 60 °C -20 - 80 °C	-10 - 60 °C -20 - 80 °C
Cable:	Approx. 3 m	Approx. 3 m
Weight:	Approx. 60 g	Approx. 60 g
Protection rating:**	IP64	IP64

* It is the accuracy of the load cell and indicator combined.

** Protection rating is only approved for the sensor. The indicator, the connector parts and cable are not secured.