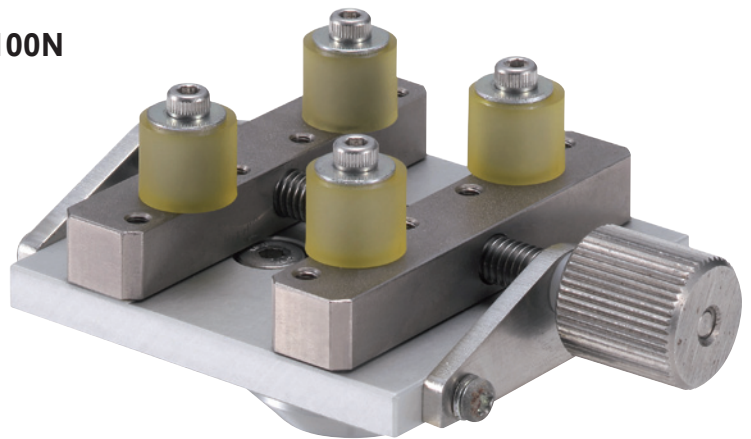


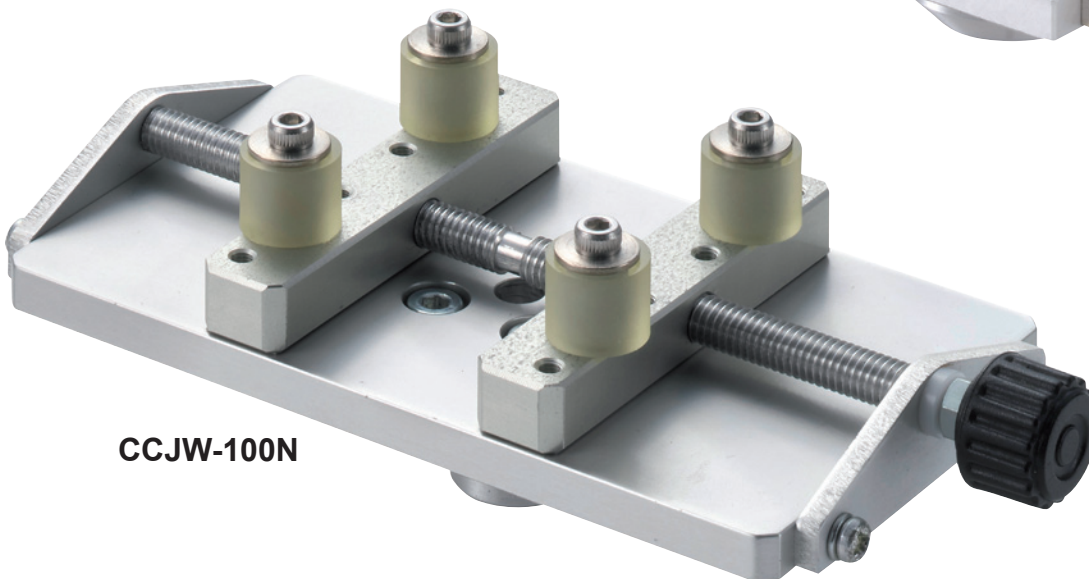
## Cap Clamping Jig CCJ-100N and CCJW-100N

Suitable for gripping round-shaped samples

**CCJ-100N**



**CCJW-100N**



### Features

- Ideal for insertion and extraction tests of connectors and caps of e. g. cosmetic packages
- The jigs are available with different pins

### Applications

- The jig can be mounted at the M6 measuring shaft of a force gauge and on the table of a test stand



### Note

- Particular materials and shape can not be used. The jig is not suitable for soft or easy to deform material
- All information is subject to change without prior notice.

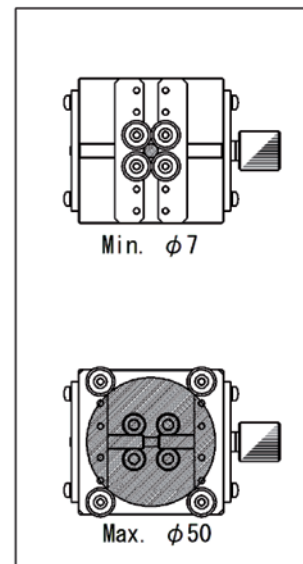
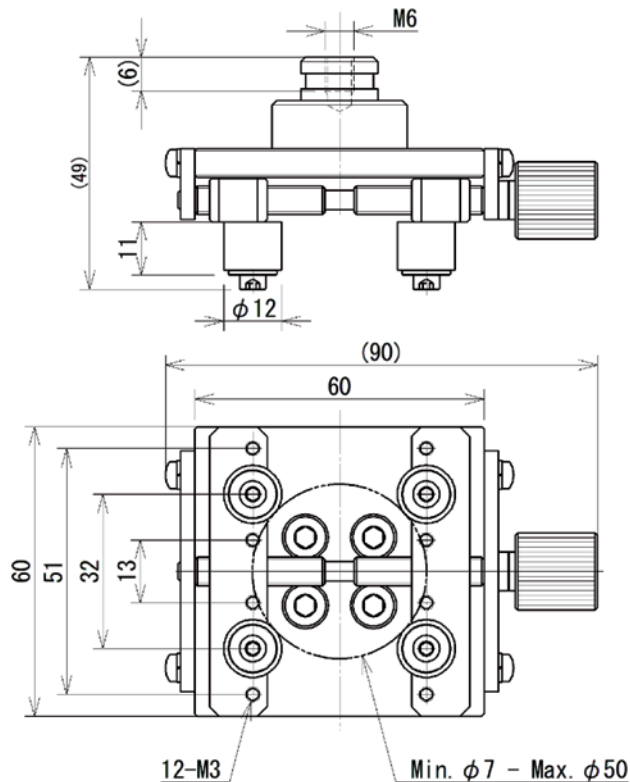
## Specifications

|                            |                              |                          |                   |                                |                          |                   |
|----------------------------|------------------------------|--------------------------|-------------------|--------------------------------|--------------------------|-------------------|
| Model                      | CCJ-100N                     | CCJ-100N-01              | CCJ-100N-02       | CCJW-100N                      | CCJW-100N-01             | CCJW-100N-02      |
| Pins<br>Length<br>Material | 10 mm<br>Urethane            | 10 mm<br>stainless steel | 30 mm<br>Urethane | 10 mm<br>Urethane              | 10 mm<br>stainless steel | 30 mm<br>Urethane |
| Clamping<br>width          | sample diameter<br>7 - 50 mm |                          |                   | sample diameter<br>10 - 100 mm |                          |                   |
| Capacity                   | 100 N                        |                          |                   |                                |                          |                   |
| Weight                     | 250 g                        | 300 g                    | 260 g             | 330 g                          | 380 g                    | 340 g             |
| Mounting                   | M6 thread                    |                          |                   |                                |                          |                   |

The weight of the attachment is also applied as load on the force gauge and had to be considered when selecting the capacity.

## Dimensional drawing

CCJ-100N



CCJW-100N

